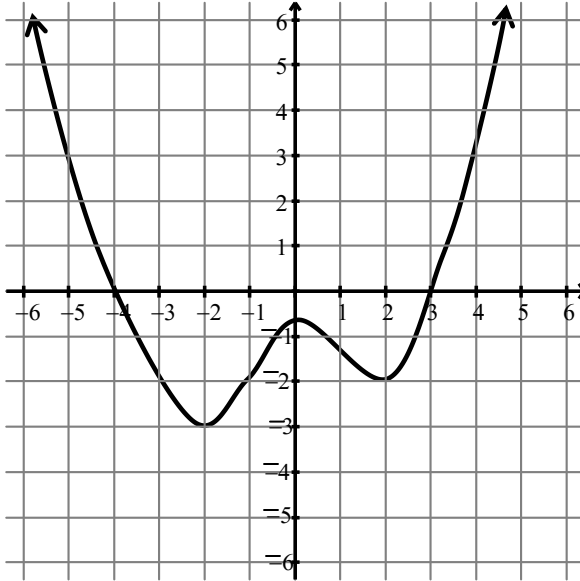


1. For the graph of $f(x)$ below, give the following:



- a) The function's domain
- b) The function's range
- c) Give $f(-5) =$
- d) Give all x -values for which $f(x) = -2$

2. Given: $f(x) = -x^2 - 3x + 8$

- a) Evaluate $f(-5)$
- b) Find and simplify $f(a-2)$.

3. Simplify as much as possible: (Hint: *Don't stop too early: After simplification, factor numerator and denominator and simplify further.*)

$$\frac{\frac{1}{3} + \frac{1}{x}}{\frac{1}{9} - \frac{1}{x^2}} =$$

3